



Dynamic Audio Solutions



**BrainCore**<sup>™</sup>  
Technology Inside

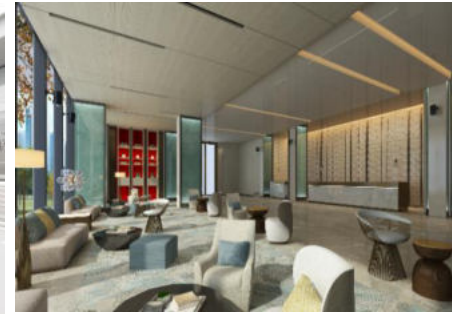


# *Artist* series

## Commercial Audio System Solution



Artist series commercial audio system solution is Audiocenter's most innovative design with 20-year R&D and in field experiences. Integrated with spatial art, advanced technology and acoustic design, Artist series can satisfy most demanding requirements and various applications for both touring performance and fixed installation .



Artist series is a premium choice for commercial audio, AV designers and system integrators with its supreme sound performance, elegant outlook, easy usage and complete product range.

The integrated system can avoid brand mixing and optimize the system integration, while lower the total project budget. This gives more advantages to secure the project.

# Artist Series Commercial Audio System Solution



Artist T45-DSP  
Artist T115S-DSP



Artist T3



Artist T4



Artist T6



Artist T8



Artist TW8



Artist TW28



Artist TW118



Artist T43



Artist T83



Artist T65



Artist T-Box40



Artist T4800  
Artist T8800



Artist T4.8V  
Artist T8.8V



BrainCore CU



Artist T88D



Artist software interface

# Artist An Exciting Esthetic Audio Product

- ⊙ Durable and elegant industrial design
- ⊙ Molded user friendly ergonomic design accessories
- ⊙ Uniform look for unobtrusive audio systems



- Ⓞ Built with BrainCore™ technology, powerful T88D audio matrix, BrainCore CU processor and the optimized easy to use software system, Artist presets can be recalled by the laptop, tablet or cell phone easily.



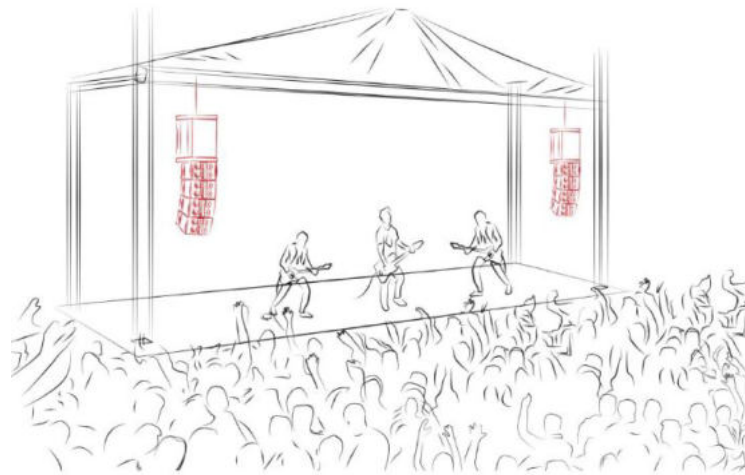
# Artist Heavyweight Performance in a Lightweight Cabinet

- ① Artist is very compact design, but with very high SPL and supreme sound performance.
- ① Artist is with customized neodymium drivers (Artist TW118/T65 is with ferrite LF drivers.) .

- ① Artist adopts wooden cabinet, with durable molded polypropylene composite material cover for protection. Asymmetrical cabinet design can avoid standing-waves. Bass reflex cabinet design ensures superior bass performance.

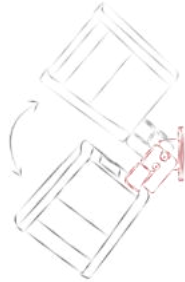
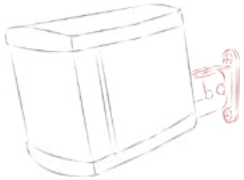


Easy to transport and fly



Can handle live shows with more than 10,000 people easily

- ⊙ All accessories are with user friendly ergonomic design and made by customized molds, taking into account the overall aesthetics while ensuring easy and quick installation.



# Artist Switchable Impedance and Voltage Output

- ⊙ With stand alone Artist T-Box40, Artist T3/T4 can switch for impedance and voltage output. Artist T43/T83/T65 have inbuilt both impedance and voltage outputs.



Artist T-Box40  
---the Stand alone Transformer Box for Impedance and Voltage Output Switch



Artist T43 inbuilt impedance and voltage output tap



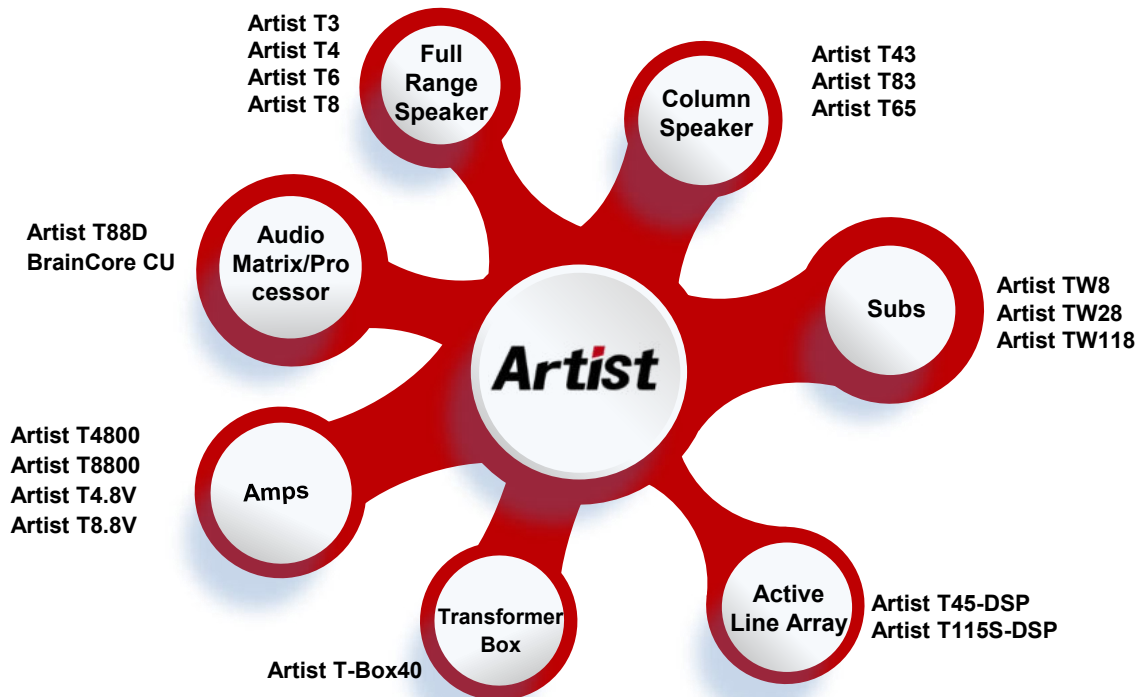
Artist T83 inbuilt impedance and voltage output tap



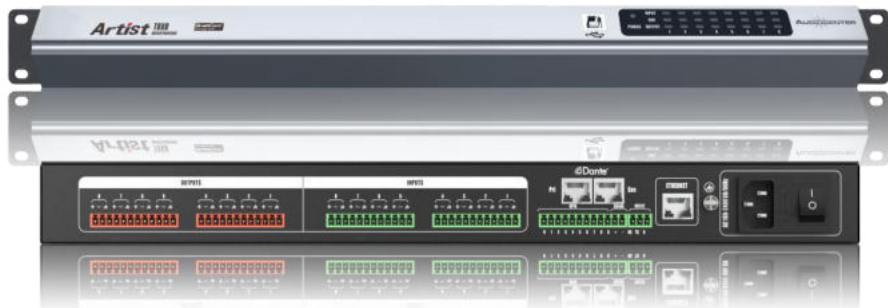
Artist T65 inbuilt impedance and voltage output tap

# Artist One Stop Buy System Solution

Artist series can be used in various venues and can provide integrated system solution for different applications. With its complete product range, Artist series is suitable for both touring performance and fixed installation.



## Artist T88D Audio Matrix



- 8 channels analogue inputs and 8 channels analogue outputs
- With both microphone input and line input, with 48V phantom power
- Supports 4\*4 Dante network audio
- Integrated with camera
- In built with functions of AFC/AEC/ANC (AEC and ANC are optional), auto mixing, matrix mixing, equalizer, crossover, limiter by DSP to deliver clear sound dynamic
- GPIO programmable connector
- Artist T88D works seamlessly with Artist speakers and amps. Users can recall the different scenes and applications from the wall panel to build up a complete commercial audio system quickly. Password can be set for protection.
- Can be linked with laptop by USB port, and with RS-232, RS-485, TCP/IP protocol for third-party control
- All functions can be configured through the Windows system. Artist T88D supports joint debugging for multiple equipments and remote control.

## BrainCore CU Processor



BrainCore CU is a comprehensive audio processor. Loaded with different presets, it not only works as processor for Artist, but also can work as processor for other Audiocenter speakers.

# Artist Multi Channel Class D Amp for Both Impedance and Voltage Output

Artist T4.8V



Artist T8.8V



- With switch mode power supply and Class D circuit design, with high working efficiency, light weight and high reliability
- With both impedance and voltage output
- For impedance output, output power is 800W@8ohm each channel. For voltage output, it's 100V/1000W or 70V/ 1000W.
- With modular design, every two channels to share one separate power supply and amplifier system
- Elaborately selected components and state-of-the-art craftwork ensures the hi-fi sound and high damping factor of Artist T series amps.

# Artist Multi Channel Class D Amp for Impedance Output

Artist T4800



Artist T8800



- With switch mode power supply and Class D circuit design, with high working efficiency, light weight and high reliability
- Two models available, 4ch T4800 and 8ch T8800
- Three working modes: stereo, parallel and bridge. Output power is 800W@8ohm each channel. Lowest working impedance of each channel is 4ohm.
- With modular design, every two channels to share one separate power supply and amplifier system
- Elaborately selected components and state-of-the-art craftwork ensures the hi-fi sound and high damping factor of Artist T series amps.

# Artist T3 Full Range Speaker



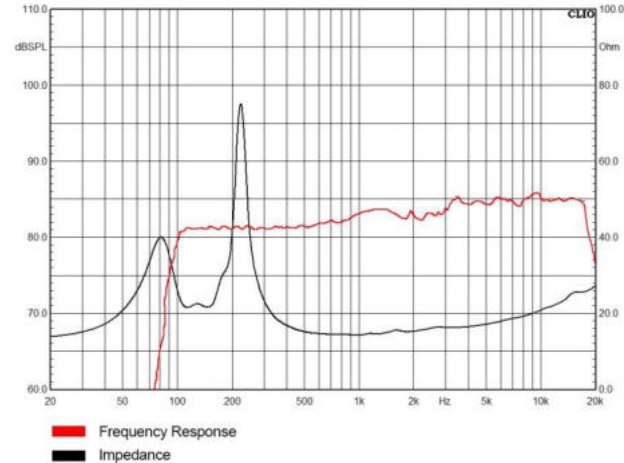
**Artist T3**



With stand alone Artist T-Box40, Artist T3/T4 can switch for impedance and voltage output. 1 Artist T-Box40 can be used with up to 4 Artist T3/T4 full-range speakers.

Voltage Power : 70V 20W/10W/5W  
100V 40W/20W/10W/5W

## Artist T3 Frequency Response Curve



**Driver : Full frequency 1x3"**

**Frequency Response : 110Hz-20KHz**

**Coverage Angle (HxV) : 110°x100°**

**Power(AES) : 40W**

**Maximum Calculated SPL/1M : 113dB**

**Rated Impedance : 16Ω**

**Cabinet Color : Black/White**

**Dimension(WxHxD): 121x133x138mm**

**Net Weight : 1.0Kg**

# Artist T4 Full Range Speaker



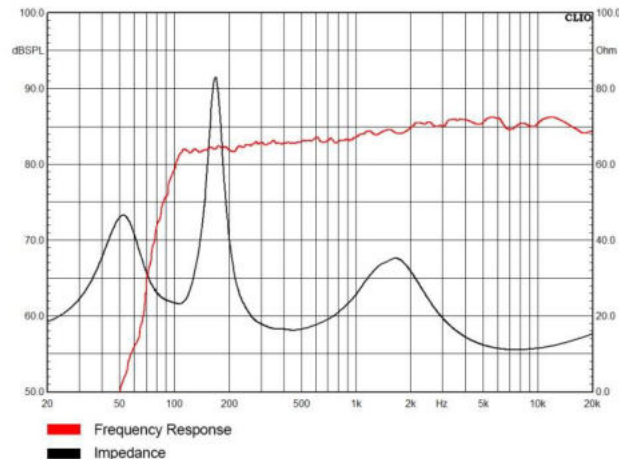
**Artist T4**



With stand alone Artist T-Box40, Artist T3/T4 can switch for impedance and voltage output. 1 Artist T-Box40 can be used with up to 4 Artist T3/T4 full-range speakers.

Voltage Power : 70V 20W/10W/5W  
100V 40W/20W/10W/5W

## Artist T4 Frequency Response Curve



**Driver : LF 1x4" ,HF 2x1"**

**Frequency Response : 100Hz-20KHz**

**Coverage Angle (HxV) : 110°x100°**

**Power(AES) : 60W**

**Maximum Calculated SPL/1M : 116dB**

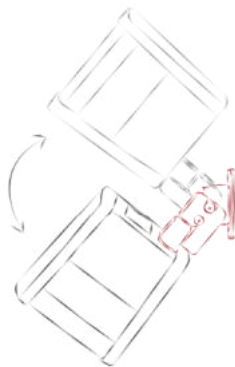
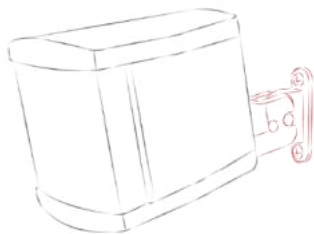
**Rated Impedance : 16Ω**

**Cabinet Color : Black/White**

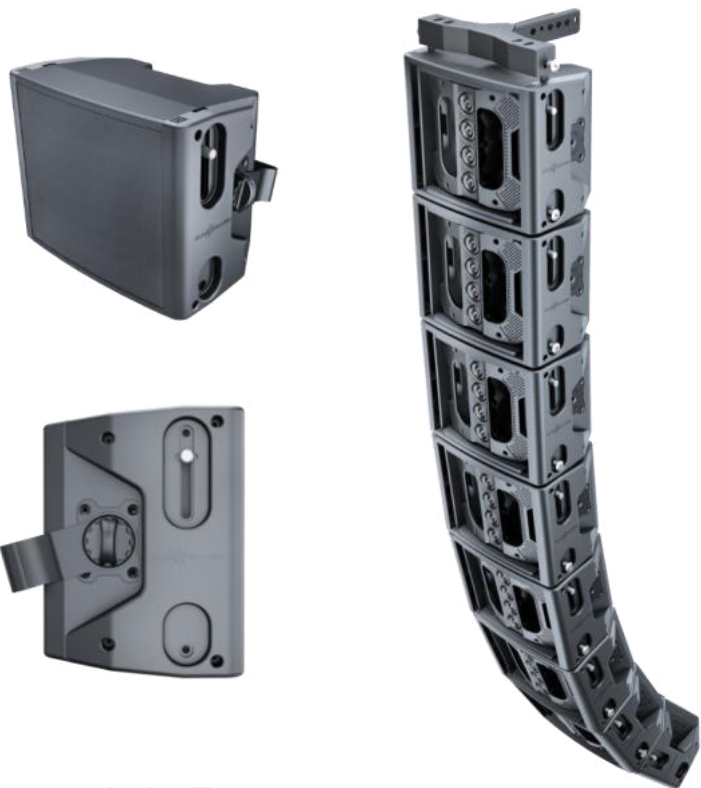
**Dimension(WxHxD) : 154x174x158mm**

**Net Weight : 2.0Kg**

# Artist Wall Mount Bracket for T3/T4

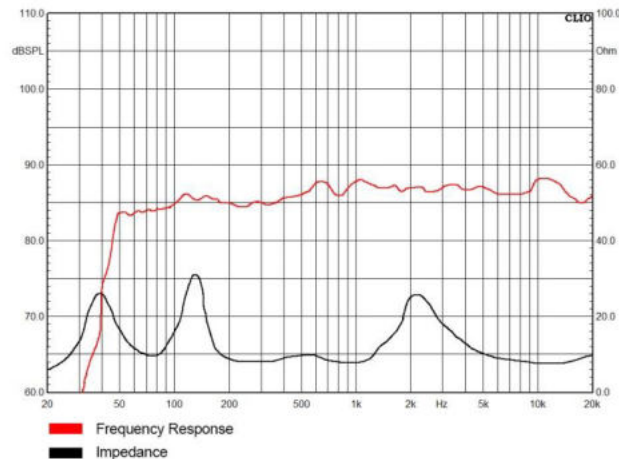


# Artist T6 Full Range Speaker



**Artist T6**

## Artist T6 Frequency Response Curve



Driver : LF 1x6" ,HF 4x1"  
Frequency Response : 55Hz-20KHz  
Coverage Angle (HxV) : 110°x100°  
Power(AES) : 160W  
Maximum Calculated SPL/1M : 126dB  
Rated Impedance : 8Ω  
Cabinet Color : Black/White  
Dimension(WxHxD) : 344x277x218mm  
Net Weight : 6.5Kg

# Artist T6 Internal Structure

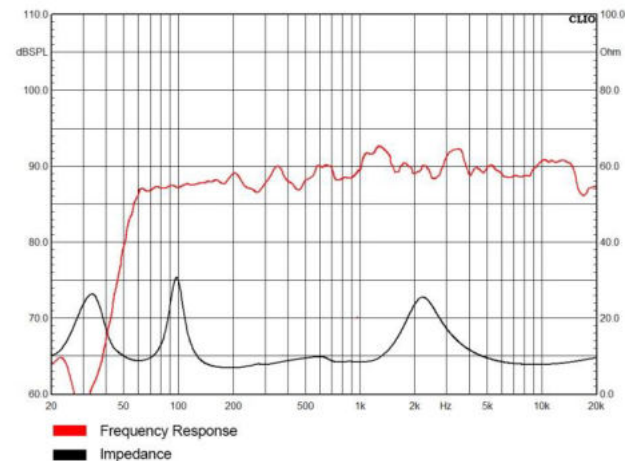


# Artist T8 Full Range Speaker



**Artist T8**

## Artist T8 Frequency Response Curve



**Driver : LF 1x8" ,HF 4x1"**

**Frequency Response : 50Hz-20KHz**

**Coverage Angle (HxV) : 110°x100°**

**Power(AES) : 260W**

**Maximum Calculated SPL/1M : 128dB**

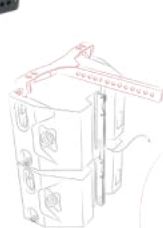
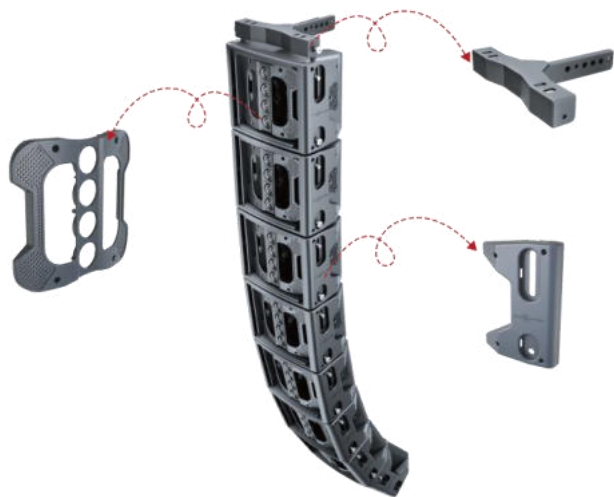
**Rated Impedance : 8Ω**

**Cabinet Color : Black/White**

**Dimension(WxHxD): 418x277x261mm**

**Net Weight : 8.0Kg**

# Artist T6/T8 Hanging Bracket and Wall Mount Bracket



# Artist T43 Full Range Column Speaker

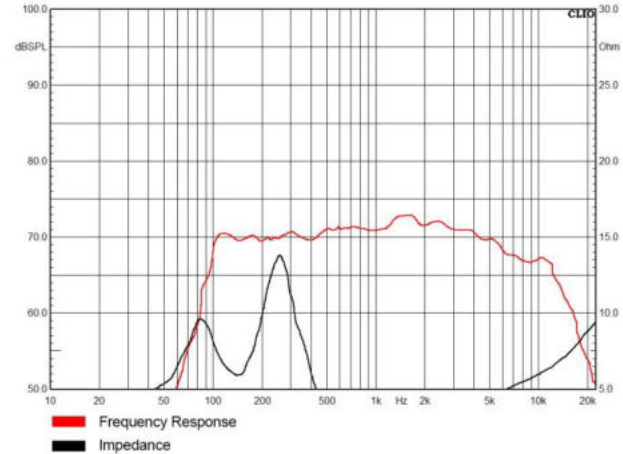


Artist T43 inbuilt impedance and voltage output tap



**Artist T43**

## Artist T43 Frequency Response Curve



**Driver : Full frequency 4x3"**

**Frequency Response : 90Hz-20KHz**

**Coverage Angle (HxV) : 110°x90°**

**Power(AES) : 160W**

**Voltage Power : 70V 20W/10W/5W  
100V 40W/20W/10W**

**Maximum Calculated SPL/1M : 127dB**

**Rated Impedance : 8Ω**

**Cabinet Color : Black/White**

**Dimension(WxHxD): 121x549x146mm**

**Net Weight : 3.6Kg**

# Artist T83 Full Range Column Speaker

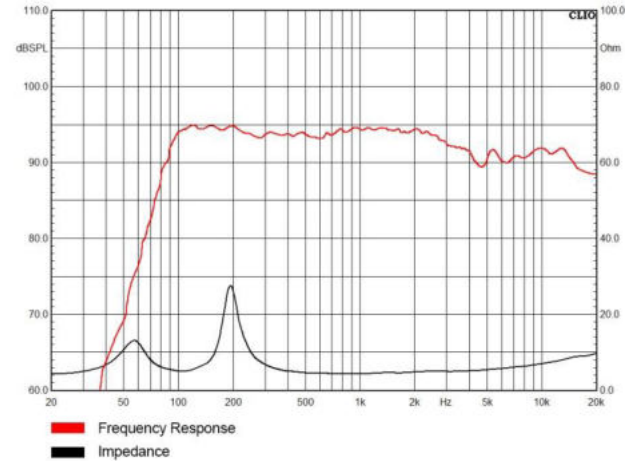


Artist T83 inbuilt impedance and voltage output tap



Artist T83

## Artist T83 Frequency Response Curve



**Driver : Full frequency 8x3"**  
**Frequency Response : 76Hz-20KHz**  
**Coverage Angle (HxV) : 110°x90°**  
**Power(AES) : 320W**  
**Voltage Power: 70V 30W/15W/7.5W**  
**100V 60W/30W/15W**  
**Maximum Calculated SPL/1M : 130dB**  
**Rated Impedance : 4Ω**  
**Cabinet Color : Black/White**  
**Dimension(WxHxD): 121x918x191mm**  
**Net Weight : 7.0Kg**

# Artist T65 Full Range Column Speaker

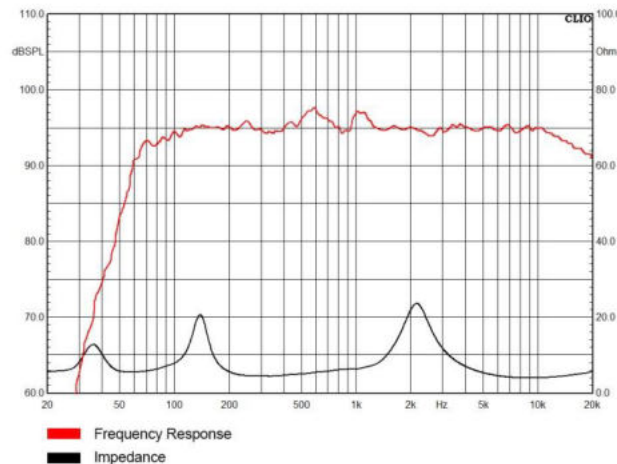


Artist T65 inbuilt impedance and voltage output tap



Artist T65

## Artist T65 Frequency Response Curve



Driver : LF 6x5" ,HF 8x1"

Frequency Response : 60Hz-20KHz

Coverage Angle (HxV) : 110°x65°

Power(AES) : 480W

Voltage Power: 70V 60W/30W/15W  
100V 120W/60W/30W

Maximum Calculated SPL/1M : 133dB

Rated Impedance : 4Ω

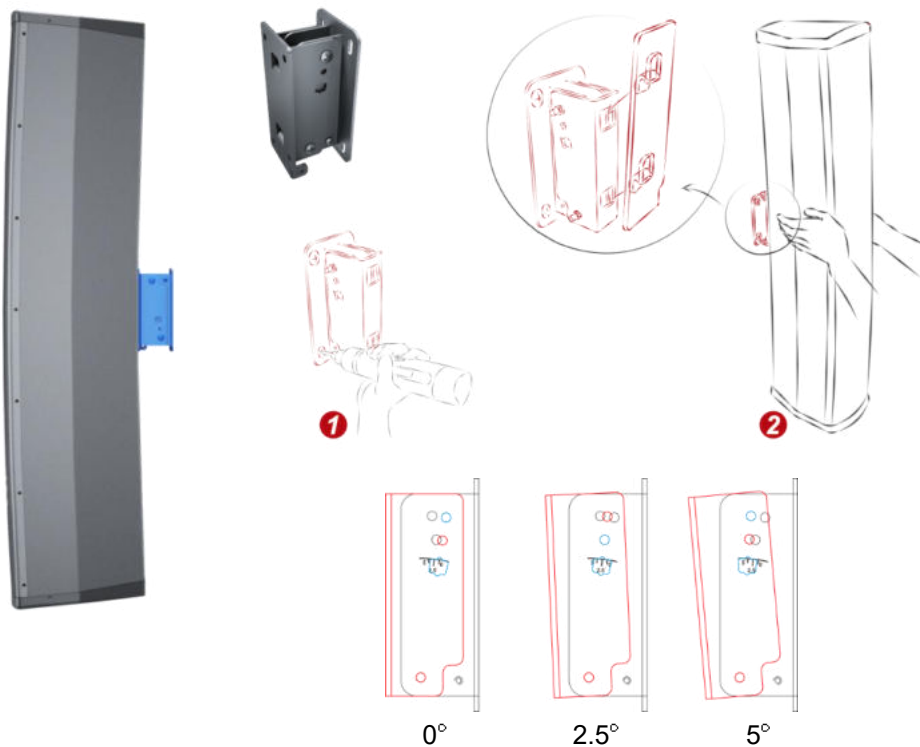
Cabinet Color : Black/White

Dimension(WxHxD) : 184x1077x255mm

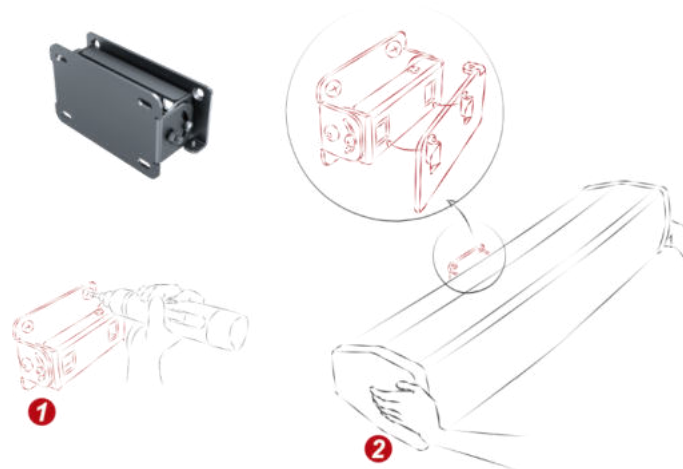
Net Weight : 15.0Kg

# Artist T43/83/65 Wall Mount Bracket

⊙ Vertical wall mount bracket ( 0°, 2.5°, 5° adjustable)

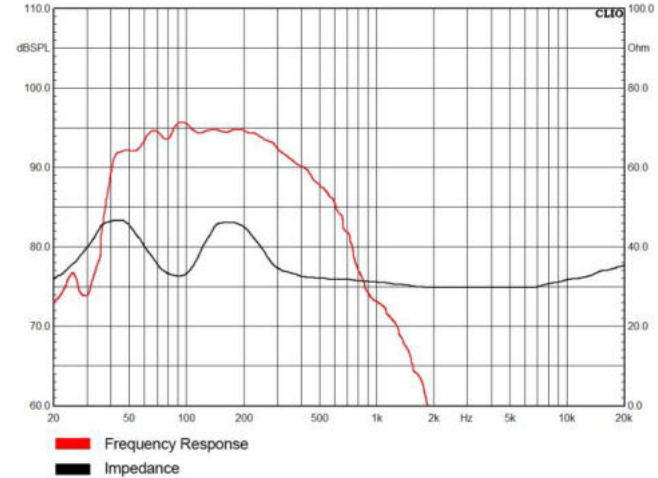


⊙ Horizontal wall mount bracket (Artist T43, Artist T83)





## Artist TW8 Frequency Response Curve



**Driver : LF 1x8"**

**Frequency Response : 37Hz-300Hz**

**Power(AES) : 250W**

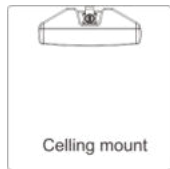
**Maximum Calculated SPL/1M : 128dB**

**Rated Impedance : 8Ω**

**Cabinet Color : Black/White**

**Dimension(WxHxD): 610x300x224mm**

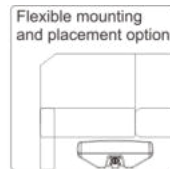
**Net Weight : 8.0Kg**



Ceiling mount

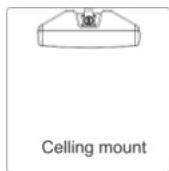


Wall mount



Flexible mounting  
and placement option

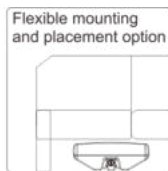
### Artist TW8



Ceiling mount



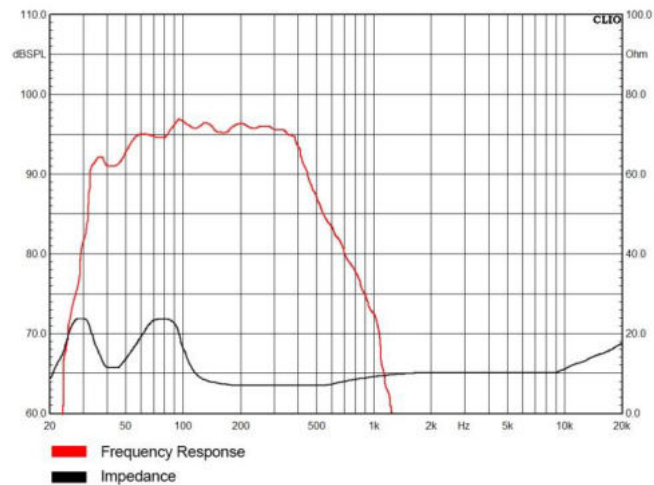
Wall mount



Flexible mounting  
and placement option

## Artist TW28

### Artist TW28 Frequency Response Curve



**Driver : LF 2x8"**

**Frequency Response : 37Hz-300Hz**

**Power(AES) : 500W**

**Maximum Calculated SPL/1M : 131dB**

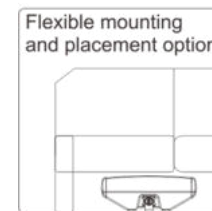
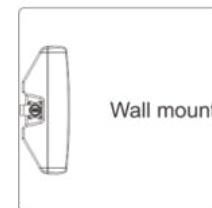
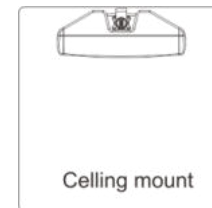
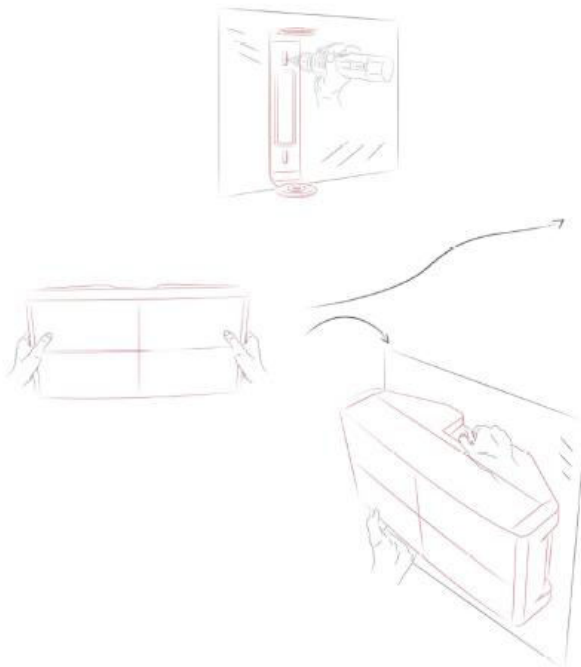
**Rated Impedance : 4Ω**

**Cabinet Color : Black/White**

**Dimension(WxHxD) : 760x408x254mm**

**Net Weight : 12.0Kg**

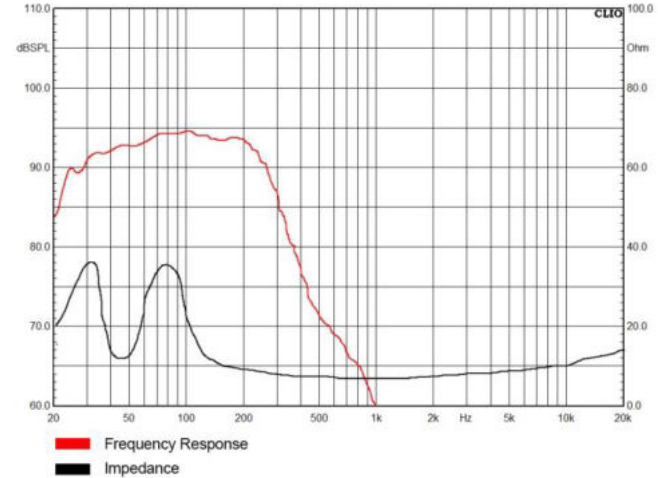
# Artist Artist TW8/TW28 Wall Mount Bracket





**Artist TW118**

### Artist TW118 Frequency Response Curve



**Driver : LF 1x18"**

**Frequency Response : 31Hz-200Hz**

**Power(AES) : 800W**

**Maximum Calculated SPL/1M : 137dB**

**Rated Impedance : 8Ω**

**Cabinet Color : Black/White**

**Dimension(WxHxD) : 548x786x568mm**

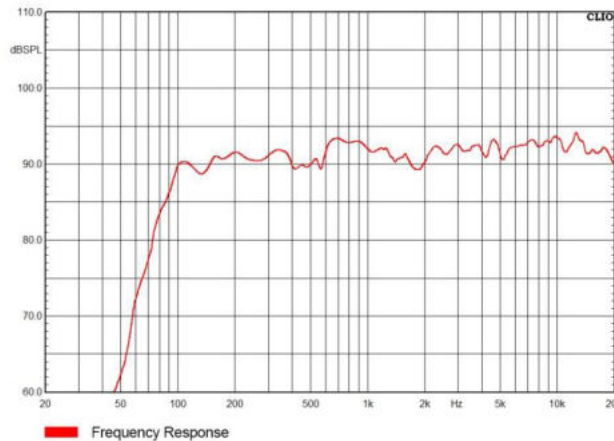
**Net Weight : 45.0Kg**

# Artist T45-DSP Active Line Array System



**Artist T45-DSP**

## Artist T45-DSP Frequency Response Curve

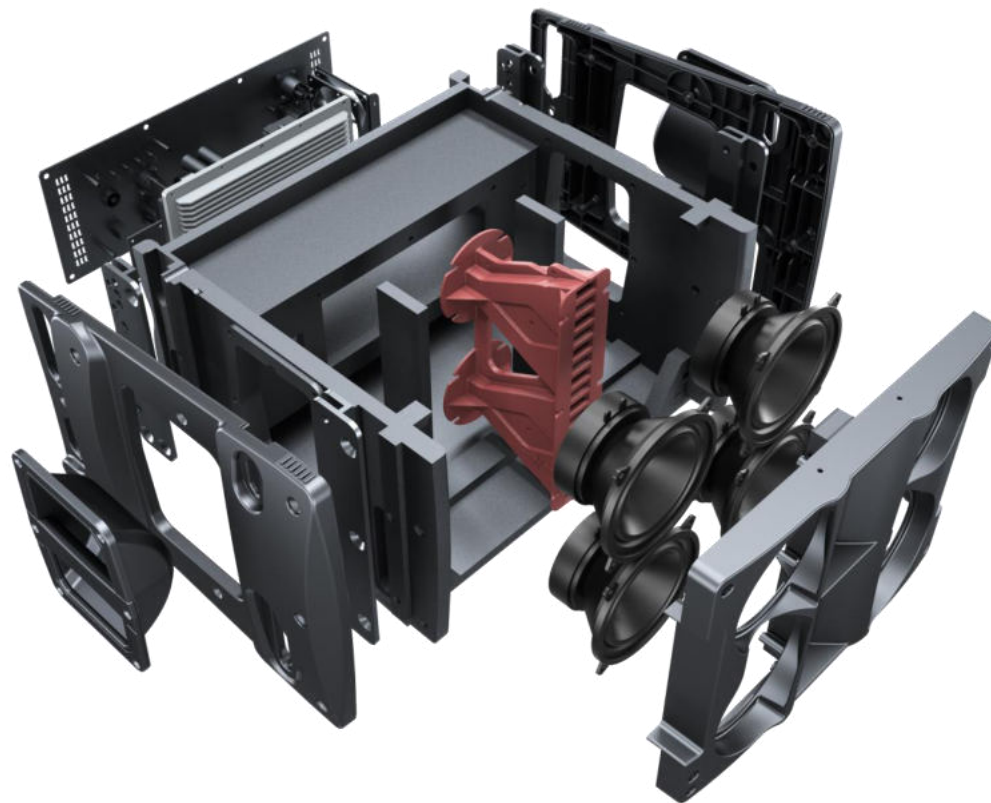


**Driver :** LF 4x5" ,HF 2x1"  
**Frequency Response :** 63Hz-20KHz  
**Horizontal Coverage Angle:** 120°  
**Vertical Coverage Angle:** Depend on the amount of the speaker  
and curvature of the line array

**Power(RMS) :** 1400W  
**Maximum Calculated SPL/1M :** 136dB  
**Cabinet Color :** Black/White  
**Dimension(WxHxD) :** 458x293x381mm  
**Net Weight :** 18.0Kg



# Artist T45-DSP Internal Structure

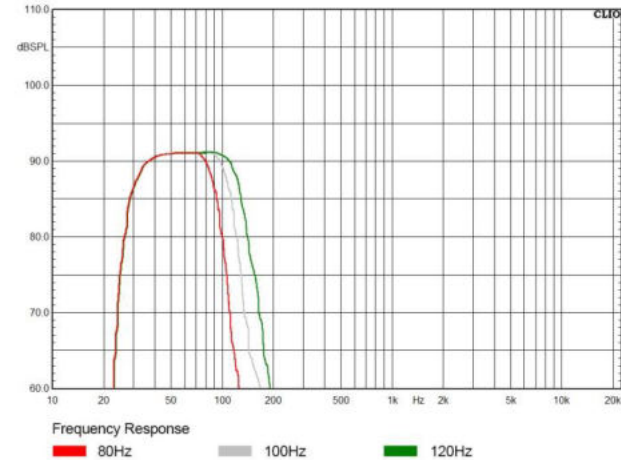


# Artist T115S-DSP Active Sub



**Artist T115S-DSP**

## Artist T115S-DSP Frequency Response Curve



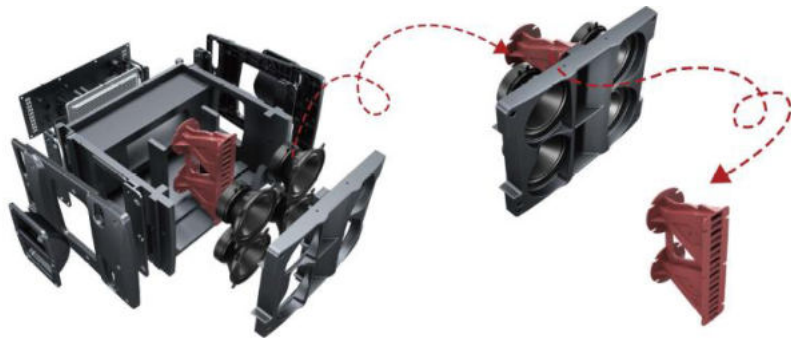
**Driver : LF 1x15"**  
**Frequency Response : 35Hz-250Hz**  
**Power(RMS) : 1400W**  
**Maximum Calculated SPL/1M : 136dB**  
**Cabinet Color : Black/White**  
**Dimension(WxHxD): 438x600x570mm**  
**Net Weight : 43.0Kg**



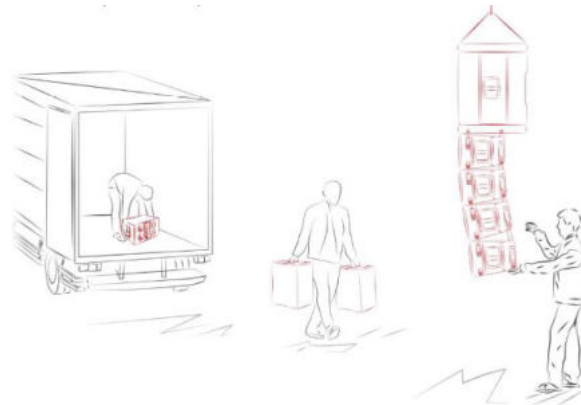
# Artist T45-DSP Main Features



① Innovative wave guide design for powerful sound engine



② Compact design for easy transportation and system set up



③ Molded industrial design with high durability



④ Supreme sound dynamic in a very compact cabinet



**AUDIOCENTER**

Dynamic Audio Solutions




**THANK YOU !**

**AUDIOCENTER**

*Together we are stronger*


**CONTACT US!**

 [sales@ac-pro.net](mailto:sales@ac-pro.net)

 [www.audiocenter.net](http://www.audiocenter.net)

 [www.twitter.com/AudiocenterPro](https://www.twitter.com/AudiocenterPro)

 [www.facebook.com/Audiocenter.Globe](https://www.facebook.com/Audiocenter.Globe)

 [www.yunzhan365.com/bookcase/whqq/](https://www.yunzhan365.com/bookcase/whqq/)