

8 Bit LCD Panel



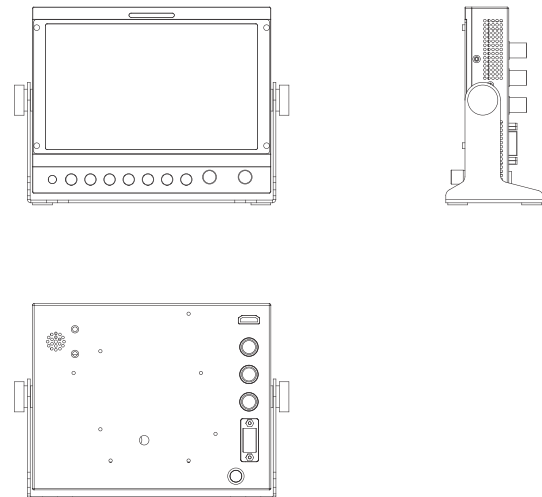
## 9" FHD BROADCAST LCD MONITOR

KVM-9051W, a portable 9inch monitor. IPS LCD panel with 1920x1200 FHD resolution, adopts metal casing design, super slim and light weight, camera mounting on all sides, combined with replaceable battery plates. Built-in waveform, vector scope, histogram and other broadcast features makes it a nice choice for professional shooting, broadcast and production applications.



LCD Panel	
Model No.	KVM-9051W
Backlight	LED
Size	9"
Resolution	1920×1200
Aspect Ratio	16 : 10
Viewing Angle	170°(H) / 170°(V)
Color Depth	16.7M
Brightness	500cd/m <sup>2</sup>
Contrast Ratio	800:1
Input	
2 x BNC	SDI 1/2 signal inputs <i>(Auto-detected and compatible to 3G/HD/SD-SDI)</i>
1 x BNC	Composite Video input
1 x HDMI	HDMI input
Output	
2 x BNC	SDI signal outputs <i>(3G/HD/SD-SDI auto-detected)</i>
Supported	HDMI-to-SDI conversion

## Main Body



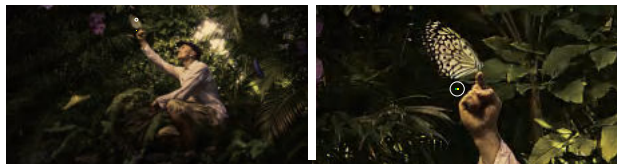
## Specifications

- 1920x1200 resolution, H/V 170° /170° wide viewing angle
- Support 3Gbs SDI 4:4:4 12Bit Signals
- 3G/HD/SD-SDI auto-detected, HDMI, composite video
- HDMI-to-SDI conversion upto 1080p
- Motion-adaptive Interlaced to Progressive
- Waveform, Vectorscope, Histogram
- Focus Assist, Part Zoom In, False Color, Zebra
- 8CH Audio Level Meter Display, UMD
- H/V delay, Markers, Blue only/Mono
- Fast Mode, DSLR Full Screen Switch
- Over Scan, Picture Flip
- Wide range DC in 6.5~25V
- Camera mounting on all sides
- LED backlight

# Main Features

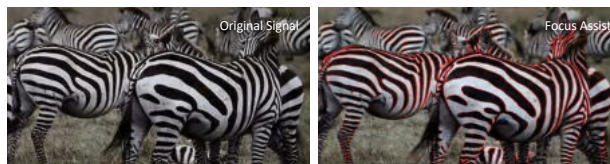
## - Part Zoom In

Part Zoom in function allows user Zoom In any part of the picture, to watch picture details more clearly, and assist for focus.



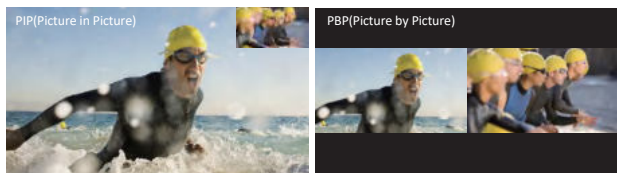
## - Focus Assist

Focus assist aids the camera operator in obtaining the sharpest possible picture, it will mark with red color where the sharp edges appear on the screen.



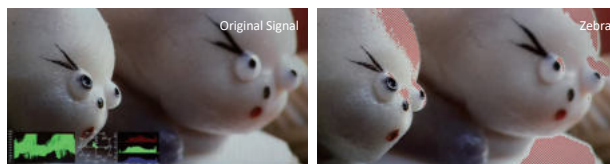
## - PIP & PBP

Images of two SDI signals manage to display on screen at the same time. It also supports PIP and PBP for one SDI signal with the other signal (Video/Component/HDMI/DVI/VGA). The two images can swap freely between each other.



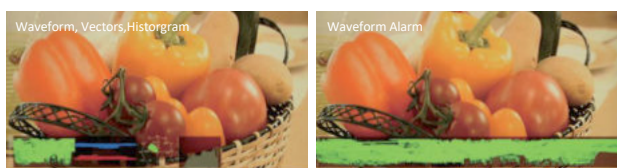
## - Zebra

Display the overexposed areas (too bright) of the image with zebra stripes, aids the camera operator to control the luminance, in order to avoid overexposure. This feature is very effective for proper exposure.



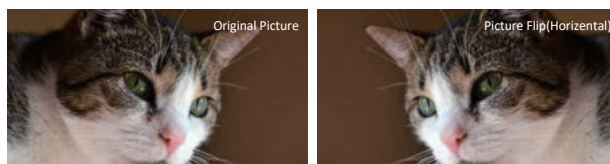
## - Waveform(Alarm), Vectors

Both SDI and HDMI support Waveform, Vectorscope, Histogram and manage to be displayed on screen at the same time. When luminance reaches or exceeds the preset value, the over exposure areas will be red marked (Waveform Alarm).



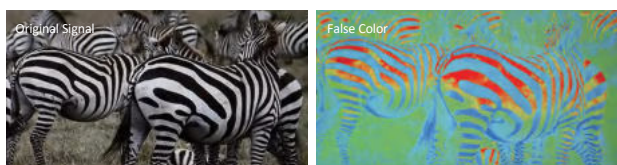
## - Picture Flip

Horizontal picture flip function allows negative image, is very useful in the studios/virtual studios, such as weather forecast, news and other programs, etc.



## - False Color

Check exposure of the image. Blue, cyan, green, yellow, orange and red color be displayed in turn to show the luminance or brightness values of the image from darkest to brightest, enables an achievement of proper exposure without applying external test equipment.



### Audio In & Out

SDI/HDMI Audio In	SDI Audio in 8 Channels Embedded Audio
Audio Meter Display	Vertical/Horizontal audio level meter display
Audio Headset Output	3.5mm headset jack
Built-in Speaker	2.5W×2

### GENERAL

Input Voltage	DC 7V~8V
Power Consumption	20 W
Power-Saving Mode	Turn off unimportant key automatically if no signal input
VESA Installation	VESA MIS-D (100×100mm)
Accessory	Power Adaptor/Carrying Bag/Sunhood

⊞ Specifications may be changed without prior notice.